





Contents.

General

| | |
|-----------------------|---|
| Introduction..... | 3 |
| Why choose Marad..... | 4 |
| Applications..... | 5 |

Modules

| | |
|-------------------|----|
| Start..... | 7 |
| Maintenance..... | 8 |
| Inventory..... | 9 |
| Purchase..... | 10 |
| Certificates..... | 11 |
| Safety..... | 12 |
| Crewing..... | 13 |
| QHSE..... | 14 |
| FLGO..... | 15 |
| Tidal..... | 16 |

Functions

| | |
|----------------|----|
| Fleetview..... | 17 |
| Library..... | 18 |
| Reports..... | 19 |

Services

| | |
|---------------------|----|
| Implementation..... | 20 |
| Consultation..... | 21 |
| Migration..... | 22 |
| Integration..... | 23 |

Company

| | |
|--------------------|----|
| About us..... | 24 |
| Customers..... | 25 |
| Social impact..... | 26 |
| Contact..... | 27 |

The only complete and affordable choice for smarter maritime fleet management.

What we do

For decades, Marad has set the gold standard in vessel management. In this brochure, we invite you to explore how our comprehensive, user-friendly software and unmatched support can streamline your fleet management.

Why us

As a family business with a pragmatic approach, we focus on what truly matters: personal, human support you can count on. Read more about our company and values in the following pages. For contact, please give us a call or send an email.



support@marad.com



(+31) 0527 258 346

OVERVIEW

Dashboard

FleetView

MODULES

Start

Maintenance

Components

Worklists

Counter

Week remarks

Logs

History

Finance

TMSA/OVMSA

Settings

Library

Pareto

Inventory

Purchase

Certificates

Safety

FLGO

Crewing

QHSE

TOOLS

Reports

Administration

Company: Flying Shipping

Location: Marasus V

Status: In Service

Filters

Collapse/Expand

Name

GMDSS

Safetyplan on deck

Emergency Generator

AED

2 - Propulsion Plant (25)

Main engine (19)

Lub oil system

Charge air system

Control mechanism

Cooling water system

Cylinders general

Cylinder Units (7)

Cylinder 1

Cylinder 2

Cylinder 3

Cylinder 4

Cylinder 5

Cylinder 6

Cylinder 7

Engine general

Exhaust manifold

Fuel oil system

Governor

Turbocharger

Turning gear and starting syste

Propulsion (4)

Gearbox

Stern tube

CPP Electrical boxes

CPP systems

Jobs

Data card

Documents

History

Parts

Logs

QHSE Reports

Certificates

+ Add

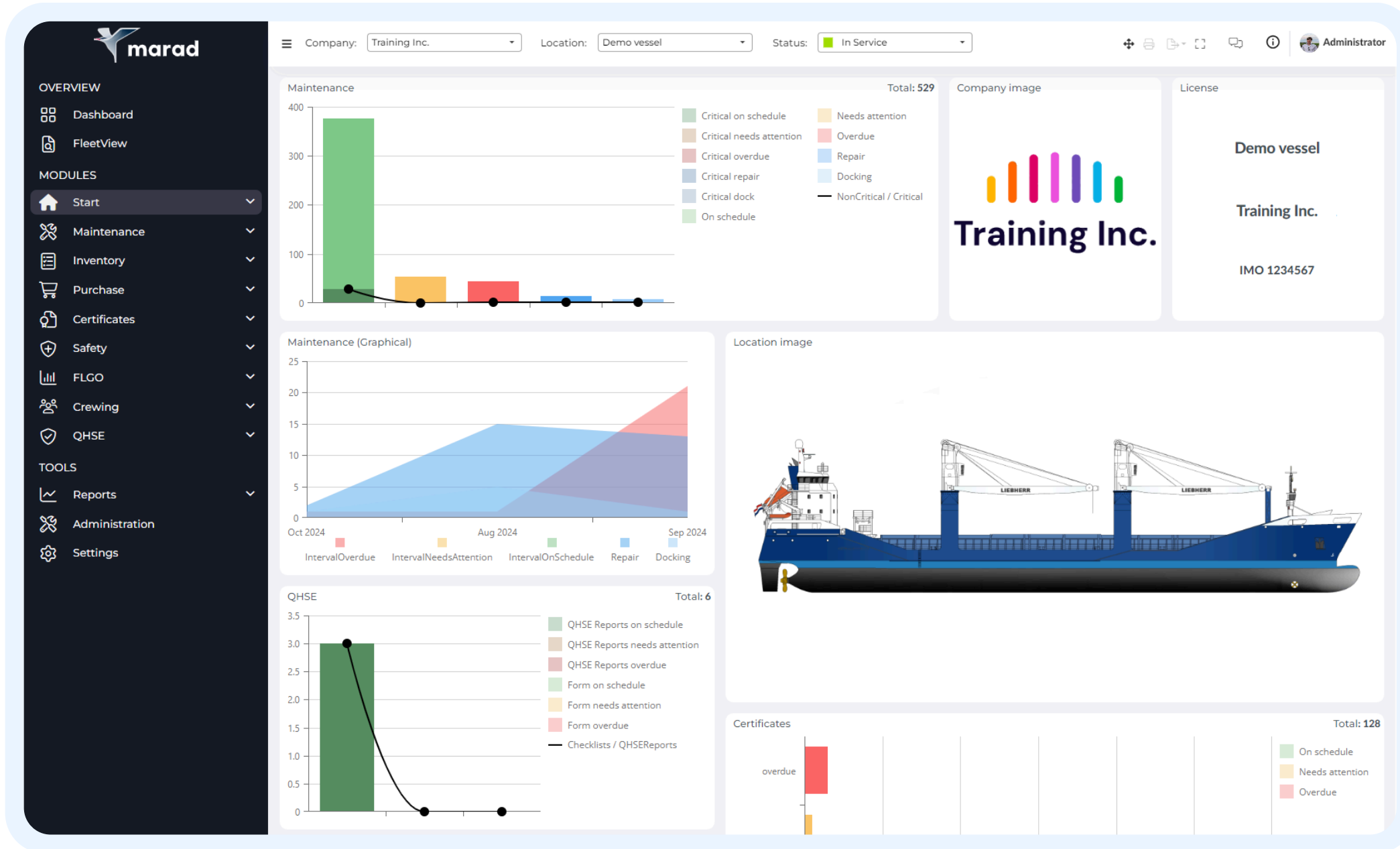
Search job

Engine general

Numeric

Include subcomponents

| Name | JC | Docs | Due date | Week | Interval | Due | Rank | Date/Counter ago | Date/Counter | Week |
|--------------------------|----|------|--------------|-----------|------------|---------------|----------------------|------------------|--------------|------|
| Maintenance (21) | | | | | | | | | | |
| <input type="checkbox"/> | | | 100 hours | 30 (2014) | 100 hou... | -21422 hours | Chief Engineer III/3 | 21522 hours ago | | |
| <input type="checkbox"/> | | | 25522 hours | 39 (2026) | 4000 h... | 4000 hours | Chief Engineer III/3 | 0 hours ago | 21522 hours | 43 |
| <input type="checkbox"/> | | | 39714 hours | 28 (2033) | 24000 ... | 18192 hours | Chief Engineer III/3 | 5808 hours ago | 15714 hours | 14 |
| <input type="checkbox"/> | | | 2000 hours | 25 (2015) | 2000 h... | -19522 hours | Chief Engineer III/3 | 21522 hours ago | | |
| <input type="checkbox"/> | | | 2000 hours | 25 (2015) | 2000 h... | -19522 hours | Chief Engineer III/3 | 21522 hours ago | | |
| <input type="checkbox"/> | | | 35714 hours | 33 (2031) | 20000 ... | 14192 hours | Chief Engineer III/3 | 5808 hours ago | 15714 hours | 14 |
| <input type="checkbox"/> | | | 1000 hours | 52 (2014) | 1000 ho... | -20522 hou... | Chief Engineer III/3 | 21522 hours ago | | |
| <input type="checkbox"/> | | | 37522 hours | 26 (2032) | 16000 h... | 16000 hours | Chief Engineer III/3 | 0 hours ago | 21522 hours | 43 |
| <input type="checkbox"/> | | | 25522 hours | 39 (2026) | 4000 h... | 4000 hours | Chief Engineer III/3 | 0 hours ago | 21522 hours | 43 |
| <input type="checkbox"/> | | | 16000 hours | 9 (2022) | 16000 h... | -5522 hours | Chief Engineer III/3 | 21522 hours ago | | |
| <input type="checkbox"/> | | | 24000 hou... | 1 (2026) | 24000 ... | 2478 hours | Chief Engineer III/3 | 21522 hours ago | | |
| <input type="checkbox"/> | | | 20000 hou... | 5 | 20000 ... | -1522 hours | Chief Engineer III/3 | 21522 hours ago | | |
| <input type="checkbox"/> | | | 8000 hours | 18 (2018) | 8000 h... | -13522 hours | Chief Engineer III/3 | 21522 hours ago | | |
| <input type="checkbox"/> | | | 4000 hours | 22 (2016) | 4000 h... | -17522 hours | Chief Engineer III/3 | 21522 hours ago | | |
| <input type="checkbox"/> | | | 31714 hours | 37 (2029) | 16000 h... | 10192 hours | Chief Engineer III/3 | 5808 hours ago | 15714 hours | 14 |
| <input type="checkbox"/> | | | | | | | Chief Engineer III/3 | | | |
| <input type="checkbox"/> | | | 39714 hours | 28 (2033) | 24000 ... | 18192 hours | Chief Engineer III/3 | 5808 hours ago | 15714 hours | 14 |
| <input type="checkbox"/> | | | 22522 hours | 16 (2025) | 1000 ho... | 1000 hours | Chief Engineer III/3 | 0 hours ago | 21522 hours | 43 |
| <input type="checkbox"/> | | | 37522 hours | 26 (2032) | 16000 h... | 16000 hours | Chief Engineer III/3 | 0 hours ago | 21522 hours | 43 |
| <input type="checkbox"/> | | | 31714 hours | 37 (2029) | 16000 h... | 10192 hours | Chief Engineer III/3 | 5808 hours ago | 15714 hours | 14 |
| <input type="checkbox"/> | | | 8000 hours | 18 (2018) | 8000 h... | -13522 hours | Chief Engineer III/3 | 21522 hours ago | | |



Why choose Marad?

Application

- ✓ Available for web, desktop, and mobile
- ✓ Cloud-based with the option to work offline
- ✓ User-friendly and intuitive
- ✓ Continuously in development

Pricing

- ✓ Unlimited users included by default
- ✓ Most affordable system on the market
- ✓ Software as a Service (SaaS) model
- ✓ Starting at €300 per year

Compliance

- ✓ Type approved by DNV
- ✓ ISO 27001 certified by LRQA
- ✓ GDPR compliant
- ✓ SSO with Microsoft Entra

Technical

- ✓ REST API to request and write data
- ✓ Securely hosted in Europe
- ✓ Free and automatic updates
- ✓ Integrated security tools

Applications.

One ecosystem, multiple solutions

All our subscriptions include access to every application by default, giving you the freedom to choose how you use Marad. Whether you're working offline onboard a vessel or utilizing the cloud version in the office, the choice is entirely yours.

Marad Cloud

Our flagship product is a powerful web application, accessible from any browser or device at <https://marad.online>.

Marad App

Our mobile app is optimized for on-the-go accessibility and is available on both Android and iOS.

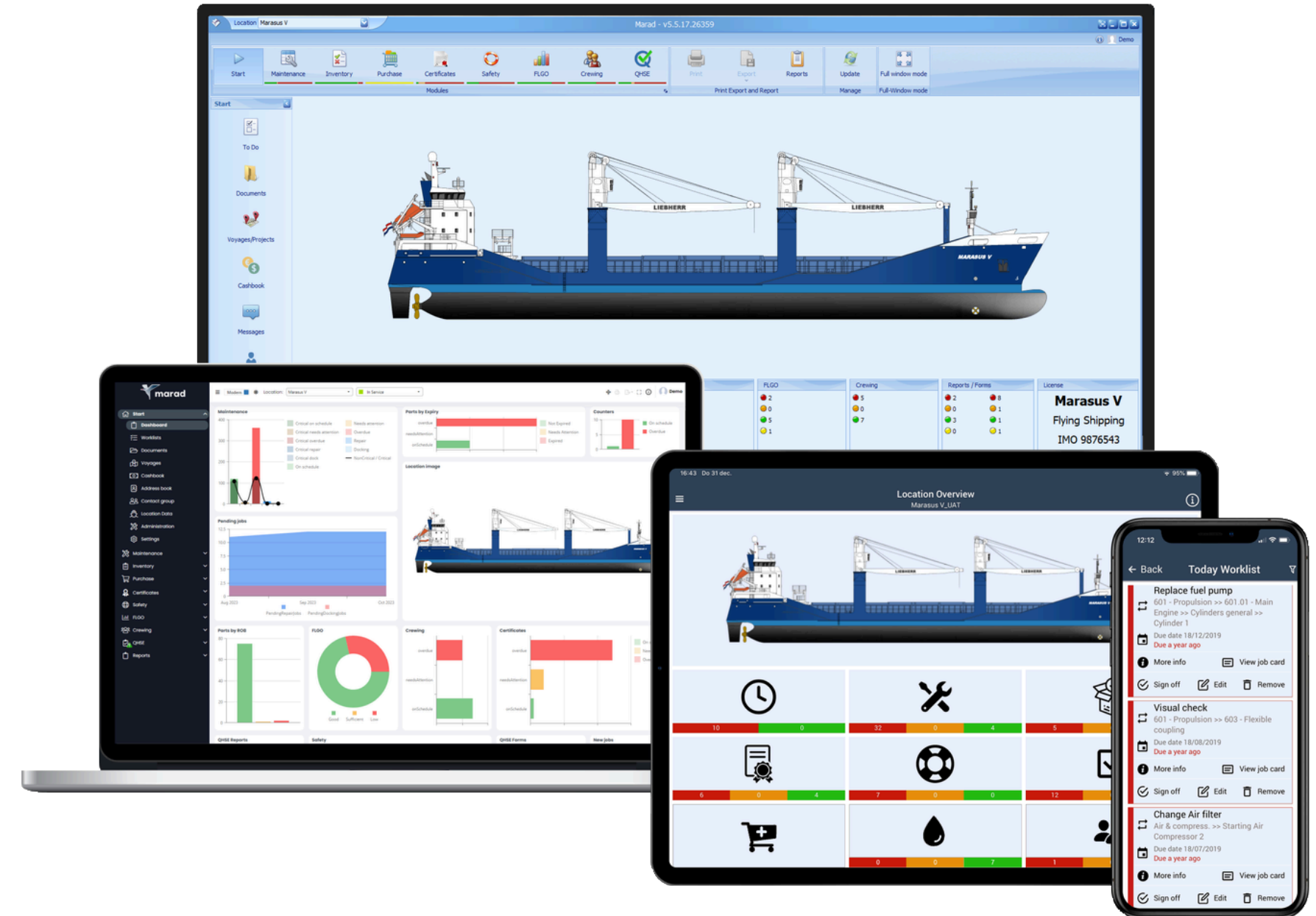
Marad Vessel

Offline + Sync

Our vessel app is designed for use in locations with unstable internet access. The vessel app can synchronize over an encrypted connection.

Marad Office

Our desktop app delivers the same full functionality as the web application, with the added advantage of seamless integration with your local system.



Modules.

Start

Manage your users, groups, and much more. Includes fleetview and extensive reporting functions.

Maintenance

Manage your planned and corrective maintenance. Includes project and docking planning.

Inventory

Manage consumables and spare parts with integrated procurement and maintenance functions.

Purchase

Manage your entire purchase flow with requisitions, RFQs, and POs. Includes an online supplier portal.

Certificates

Manage and keep track of all your certificates. Stay compliant with extensive certificate management.

Crewing

Optimize your crew management and planning. Includes contracts, document libraries, and much more.

Safety

Keep track of safety drills, work permits, and meetings. Includes integration with crewing module.

QHSE

Create reports, findings, checklists, and more. Includes extensive document control functions.

FLGO

Centralize the management of your bunkers, liquids, and gases. Includes MRV and voyage reports.

Tidal

Manage tidal turbines and arrays. Includes maintenance window identifier and planning tool.

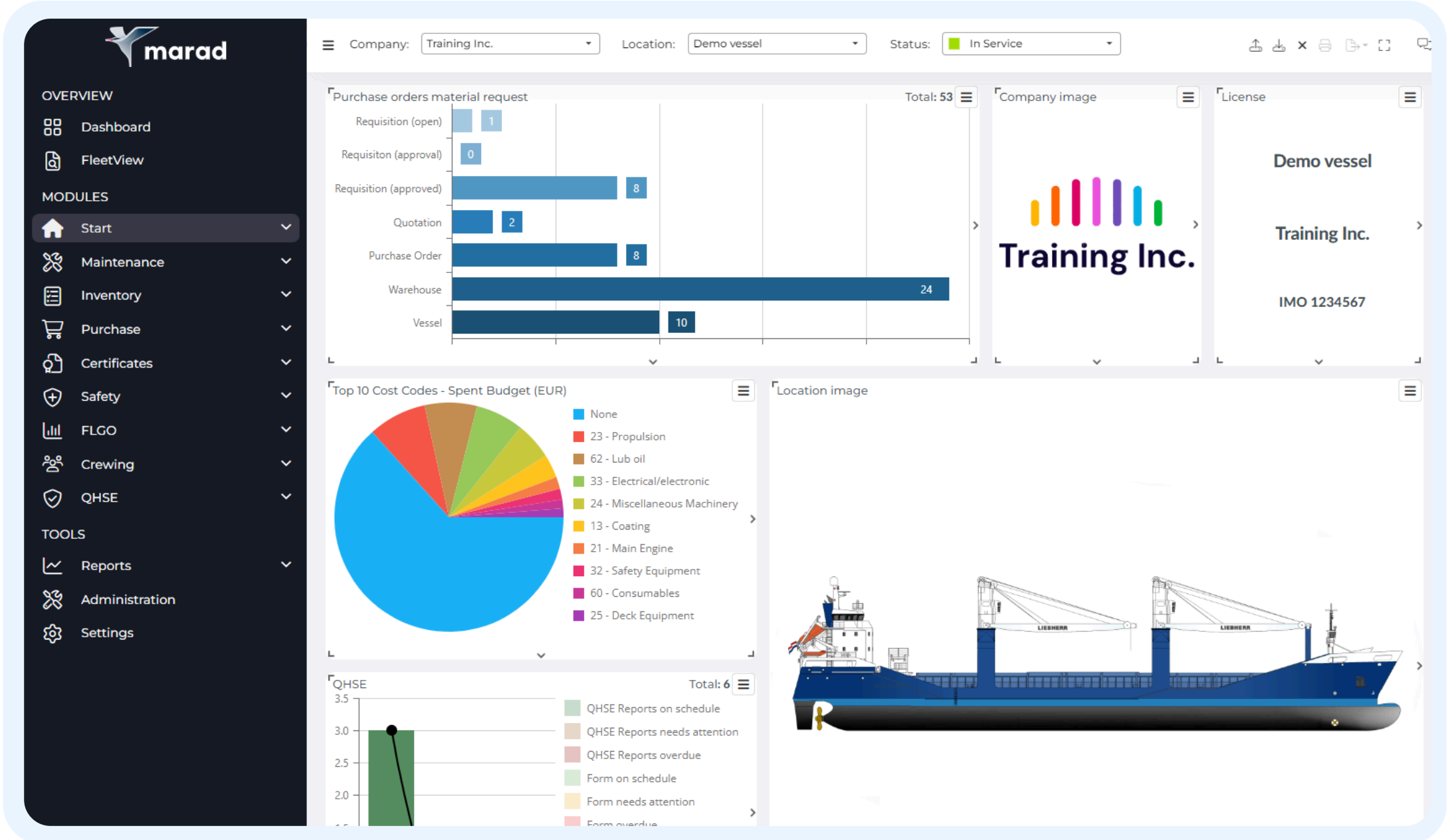
Module | Start

About

The start module is the foundation of Marad, providing a centralized hub for managing users, user groups, authorizations, budgets, and various other administrative functions. It is designed to ensure seamless control over your organization's operations.

Key features

- ✓ Create and manage user profiles
- ✓ Implement role-based access control
- ✓ Track voyages and MRV-reports
- ✓ Generate reports for your fleet
- ✓ Add document templates
- ✓ View fleet status and logs
- ✓ Set and monitor budgets and cost codes
- ✓ Track expenditures and adjust plans
- ✓ Manage cash and address books
- ✓ Generate offline vessel setups
- ✓ Manage projects and planning
- ✓ Export documents such as KPI-reports





The maintenance module is a type-approved tool for creating and managing a planned maintenance system (PMS). It allows you to create maintenance groups and add components within those groups for efficient task organization.

- ✓ Group and task system
- ✓ Repairs and corrective maintenance
- ✓ Cost estimation and budgeting
- ✓ Linked to inventory and spares
- ✓ Docking and project planning
- ✓ Task approvals and permissions
- ✓ Master equipment library
- ✓ Compatible with SFI or custom structure
- ✓ Automatic reading of equipment counters
- ✓ Extremely user-friendly traffic light system
- ✓ Reports such as TMSA, OVMSA, and Pareto
- ✓ Extensive log and history management

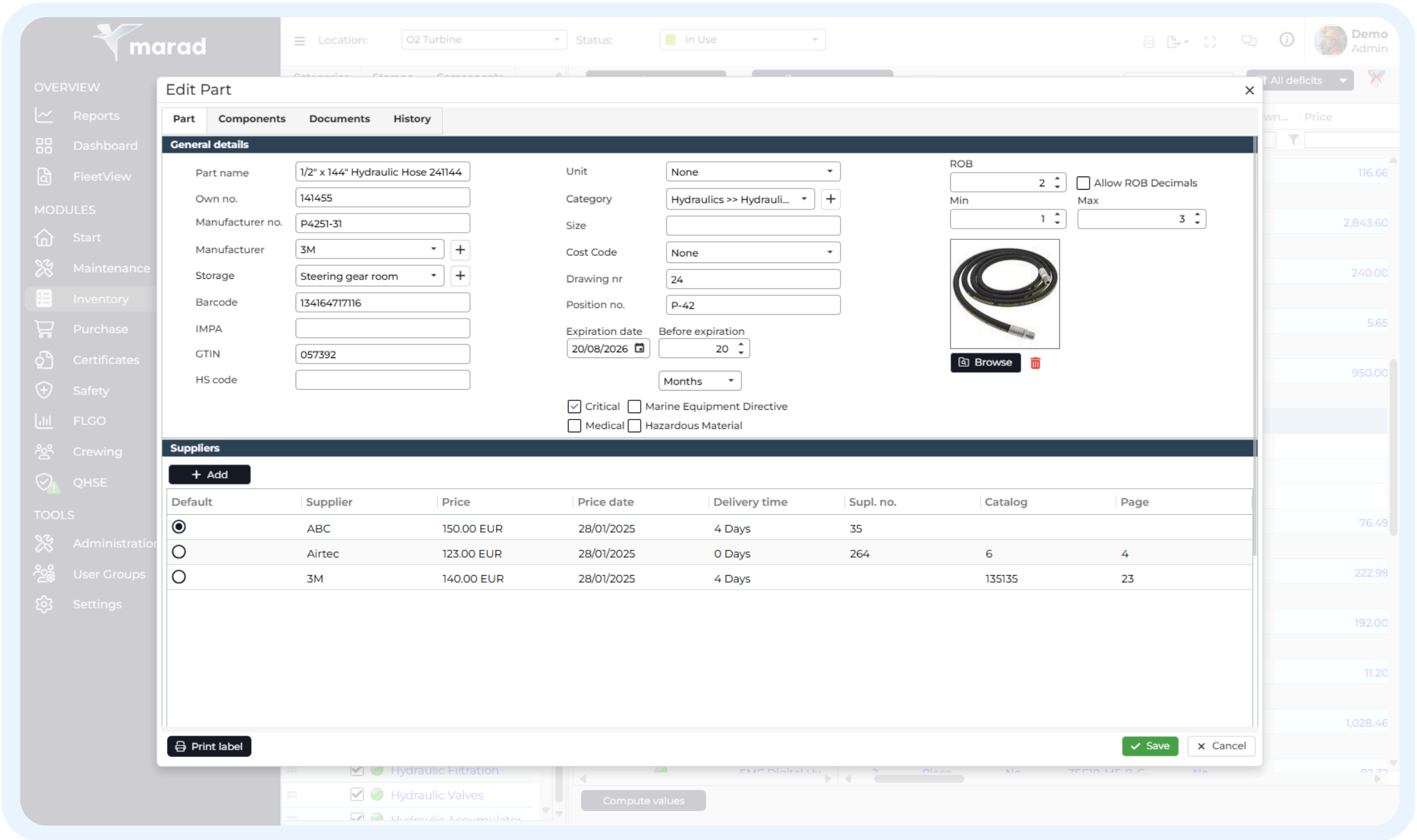
Module | Inventory

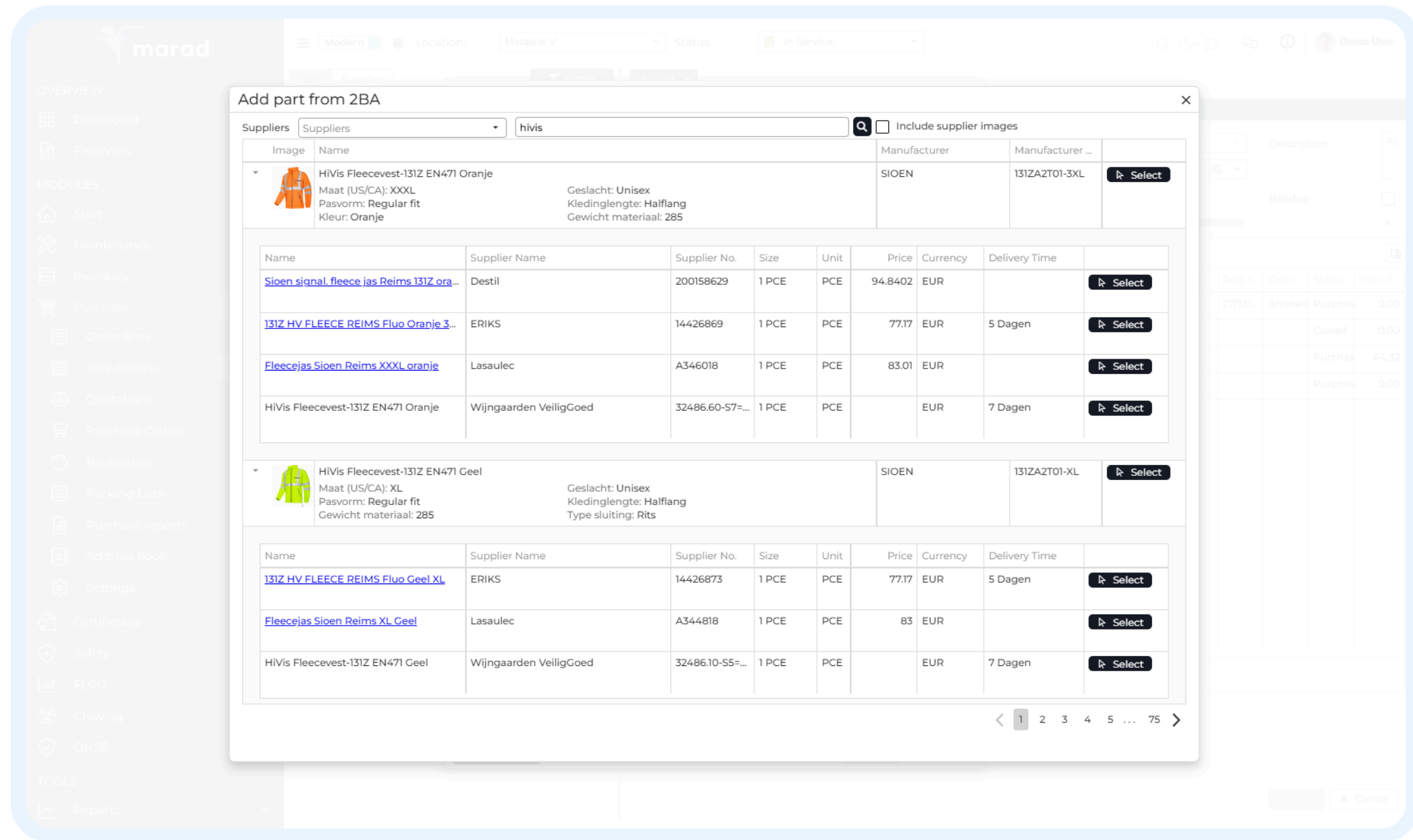
About

The inventory module helps you manage and monitor all spare parts and consumables, and ensures the minimum amount of a particular part is still available. You can group parts by category, storage location, or maintenance components.

Key features

- ✓ Manage spare parts and consumables
- ✓ Connected maintenance and purchase
- ✓ Automatic stock deductions
- ✓ Inventory of Hazardous Materials (IHM)
- ✓ Powerful import and export tools
- ✓ Manage (non)critical parts
- ✓ Master spare part library
- ✓ Easy deficit ordering tool
- ✓ Automatically update supplier prices
- ✓ Manage by category, storage, or components
- ✓ Generate consumption reports
- ✓ Order history and part logs





Module | Purchase

About

The purchase module streamlines item procurement and displays open and processed order overviews. Manage your entire purchase flow, from open requisitions to quotations and purchase orders. Includes a supplier portal for live quotations updates.

Key features

- ✔ Manage your entire purchase flow
- ✔ Customize reports such as RFQ's and PO's
- ✔ Integrated with 2BA and Nareto
- ✔ Access to millions of products
- ✔ Docking and project integration
- ✔ Custom purchase flows
- ✔ Financial approvals and authorizations
- ✔ Flexible requisitions and order lines
- ✔ Extensive budgeting and cost codes
- ✔ Drag and drop orders for extra usability
- ✔ Request services such as repairs
- ✔ Log and history management

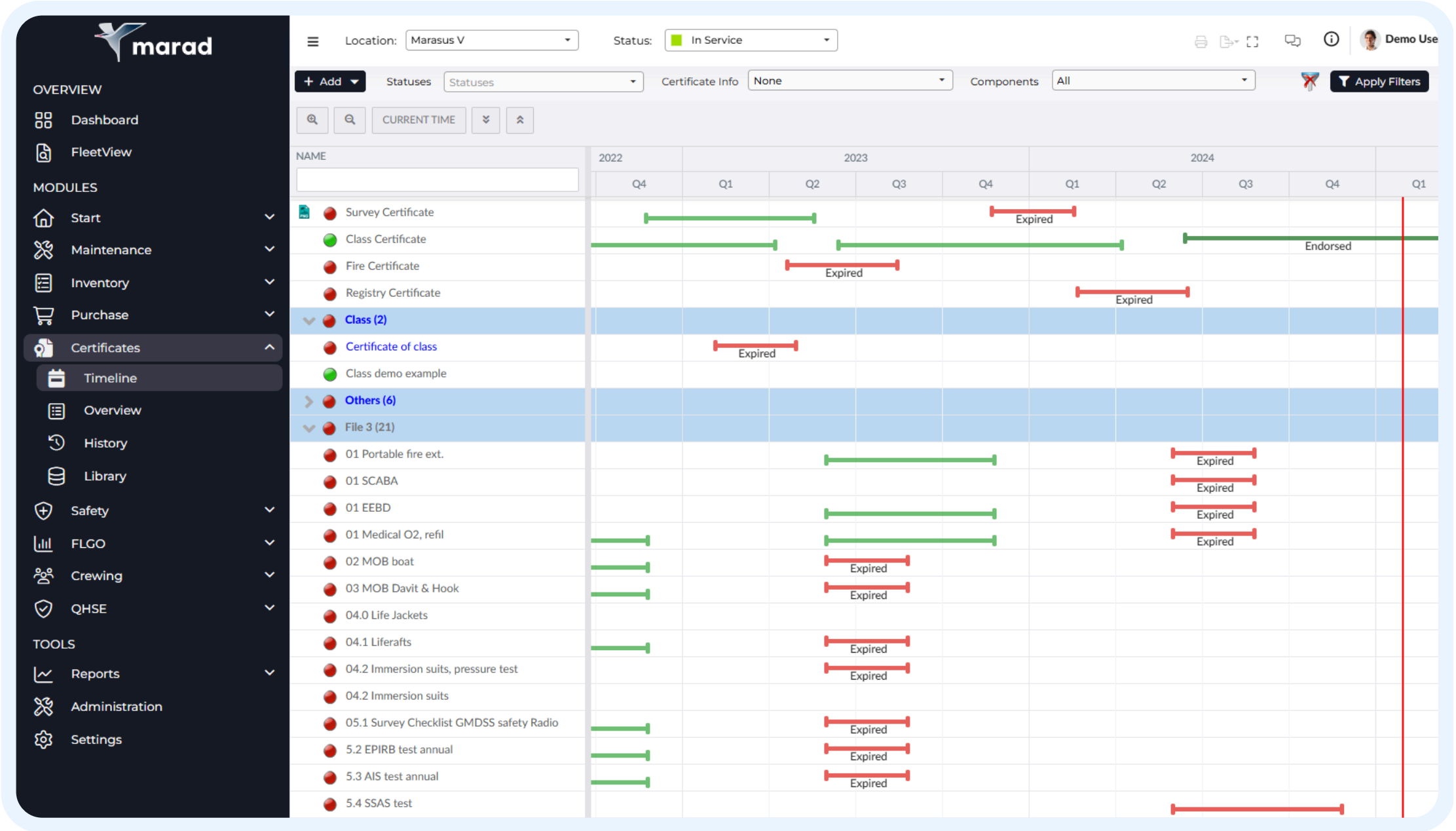
Module | Certificates

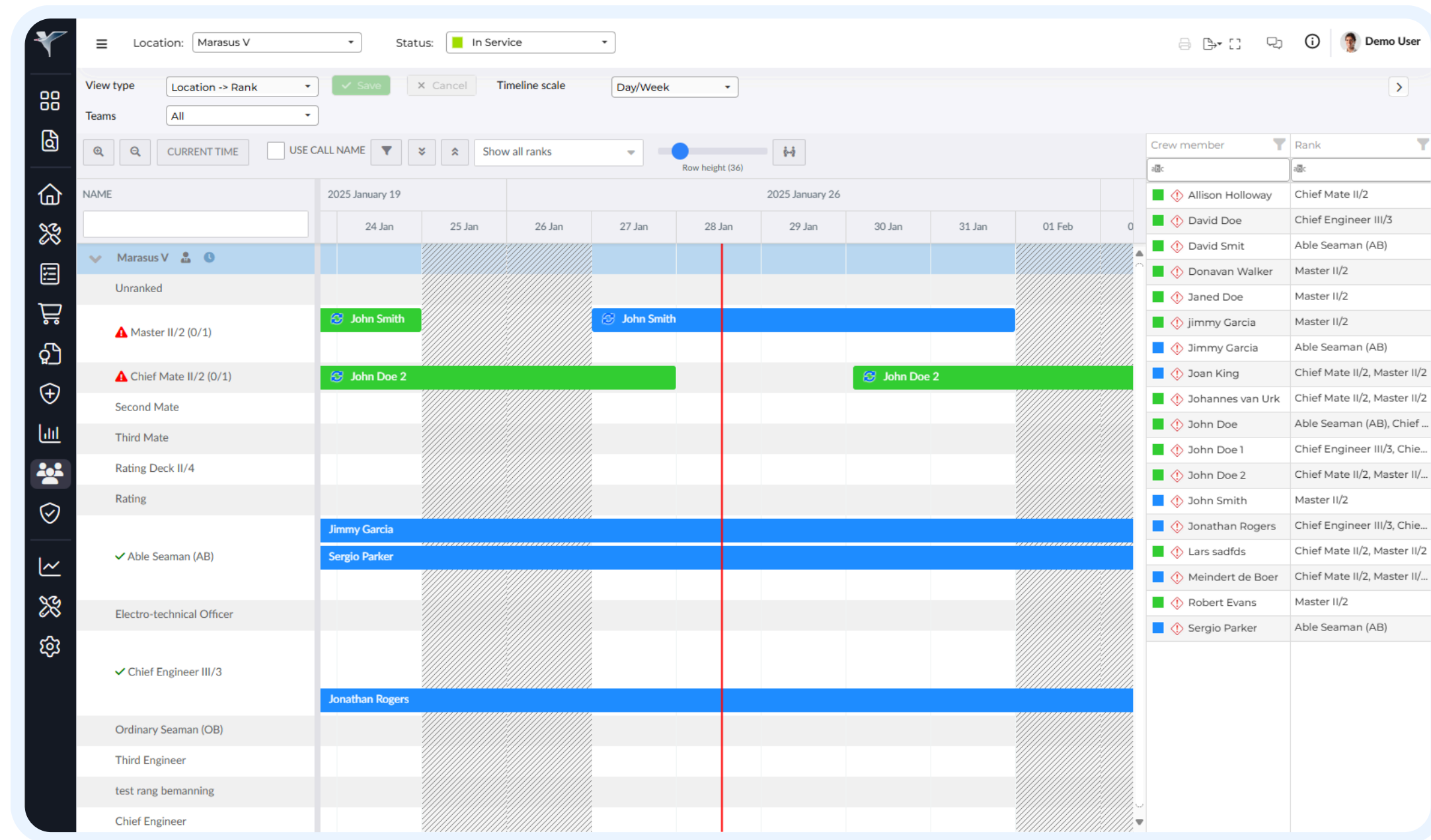
About

The certificates module enables effortless management of certificate entries, expirations, and renewals of all your certificates. It supports various types of certificates, categorized for easy organization, and provides a comprehensive overview of their status.

Key features

- ✔ User-friendly overviews
 - ✔ Renew, survey, and endorse
 - ✔ Integrated with maintenance
 - ✔ Visual and numerical boards
 - ✔ Master certificate library
- ✔ Add unlimited categories and certificates
 - ✔ Annual and intermediate surveys
 - ✔ Easily archive documents
 - ✔ Export to zip to include all document types
 - ✔ Includes various exports and reports





Module | Crewing

About

The crewing module helps you optimize your crew management. It includes everything you need such as crew details, schedules, a visual planning board, safe manning, document libraries, rest hours, autofilled contracts, and much more.

Key features

- ✓ Manage unlimited crew members
- ✓ Automatic IMO FAL form generation
- ✓ Easily schedule crew members
- ✓ Assign documents per rank
- ✓ Pre-built reports and exports
- ✓ Manage work- and rest hours
- ✓ User-friendly contract template builder
- ✓ Linked with safety drills to log participation
- ✓ Ensure compliance with safe manning
- ✓ Manage crew effects and other data
- ✓ Create rest-hour regimes and templates
- ✓ Digital signing of documents

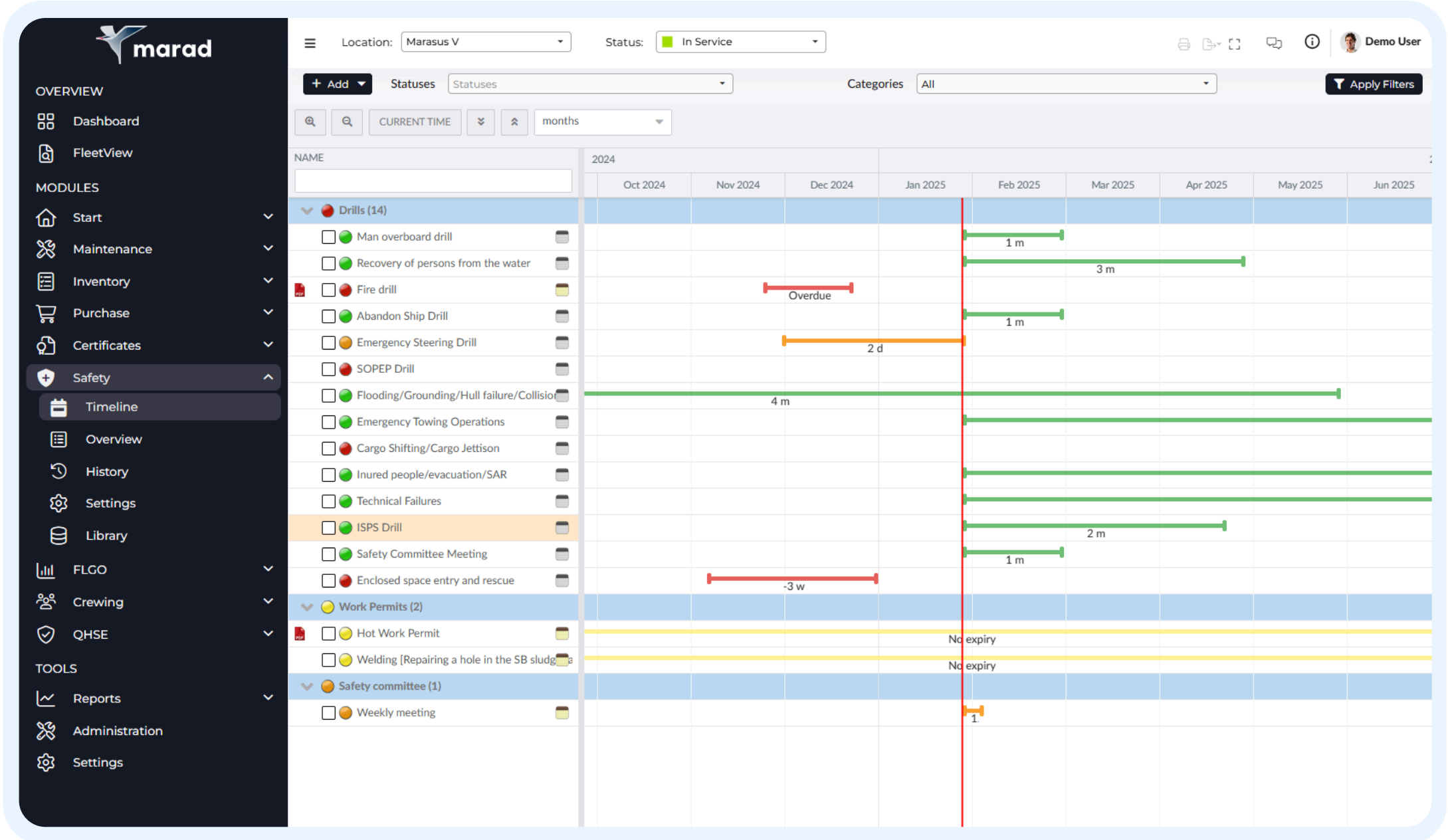
Module | Safety

About

The safety module is designed to keep track of all your mandatory safety drills, for example a fire or abandon ship drill. Marad will notify you when you have to perform each drill. You can use the templates to easily write reports and assign crew members.

Key features

- ✔ Create safety drills and permits
 - ✔ Easily assign drills from the library
 - ✔ Linked to crew members
 - ✔ Monthly to-do lists
 - ✔ Full traceability of safety records
- ✔ Graphical and numerical overviews
 - ✔ Extremely user-friendly interface
 - ✔ Detailed drill templates
 - ✔ Set fixed intervals per item
 - ✔ Extensive log and history management



OVERVIEW

Dashboard

FleetView

MODULES

Start

Maintenance

Inventory

Purchase

Certificates

Safety

FLGO

Crewing

QHSE

Reports/Findings

Forms/Checklists

Manual/Doc Control

History

Library

QHSE Settings

QHSE Reports

TOOLS

Reports

Administration

Settings

☰

Location: Marasus V

Status: In Service

Print

Share

Fullscreen

Help

Demo User

⬆

Name

Engine Room (3)

Performance report

Bunkering

Ship's hold

Cleaning (1)

Galley

Safety (2)

Acces to ship

Ship's deck

Handover (1)

Master handover

Overview

History

Execute form: Performance report

One column

Two columns

Three columns

1. General

1.1. Date of report

28/01/2025

Actual date

1.7. Pitch

1.2. Engineer

John Doe

1.8. RPM

2,000

1.3. Wind force (Bft)

1 ————— 6 ————— 12

1.9. Load

1.4. Sea

Slight

1.10. Speed (kn)

1.5. Swell

Low

1.11. Engine room temperature

1.6. Draught fore/aft

2. Cylinders

2.1. Cylinder #1 - Combustion pressure

2.7. Cylinder #3 - Combustion pressure

2.2. Cylinder #1 - Exhaust temperature

2.8. Cylinder #3 - Exhaust temperature

2.3. Cylinder #1 - Fuel rack (at cylinder)

2.9. Cylinder #3 - Fuel rack (at cylinder)

2.4. Cylinder #2 - Combustion pressure

2.10. Cylinder #4 - Combustion pressure

2.5. Cylinder #2 - Exhaust temperature

2.11. Cylinder #4 - Exhaust temperature

2.6. Cylinder #2 - Exhaust temperature

2.12. Cylinder #4 - Fuel rack (at cylinder)

3. Charge air

Remarks and documents

Save

Cancel

Module | QHSE

About

The QHSE module offers a comprehensive suite of tools to efficiently manage reports and findings, document control, and checklists. These integrated functions ensure seamless oversight of every aspect of your fleet's QHSE compliance.

Key features

- ✓ Report system for audits and findings
- ✓ Custom checklists and digital signing
- ✓ Extensive document control systems
- ✓ Manage ISM, ISPS, and MLC
- ✓ Automatic follow-up reports
- ✓ Easy access on mobile phones
- ✓ Observations, deficiencies, and more
- ✓ Distribute manuals to your fleet
- ✓ Assign writers, approvers, and releasers
- ✓ Read logs to track vessel participation
- ✓ Fleetwide checklist library
- ✓ Extensive log and history management

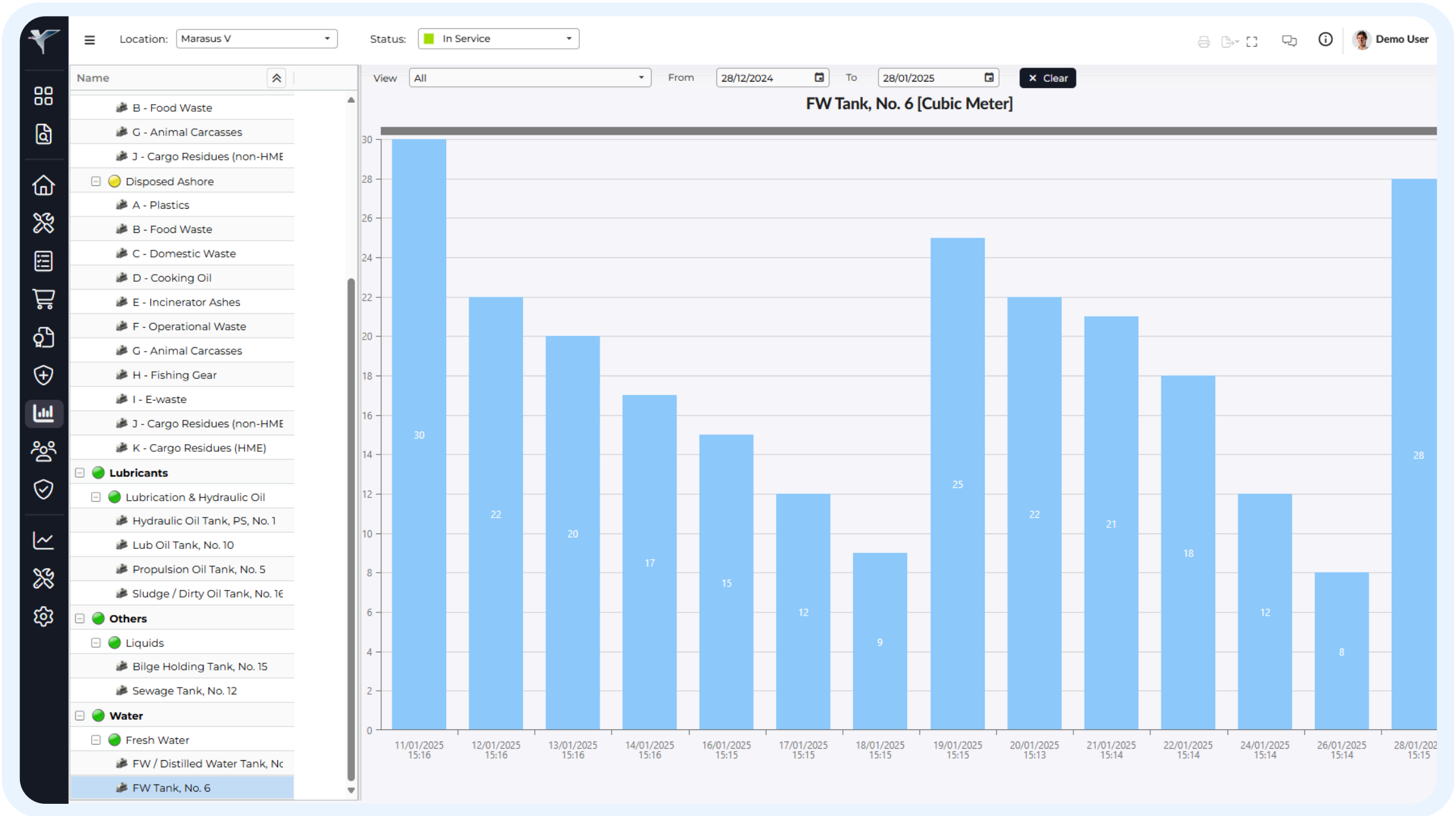
Module | FLGO

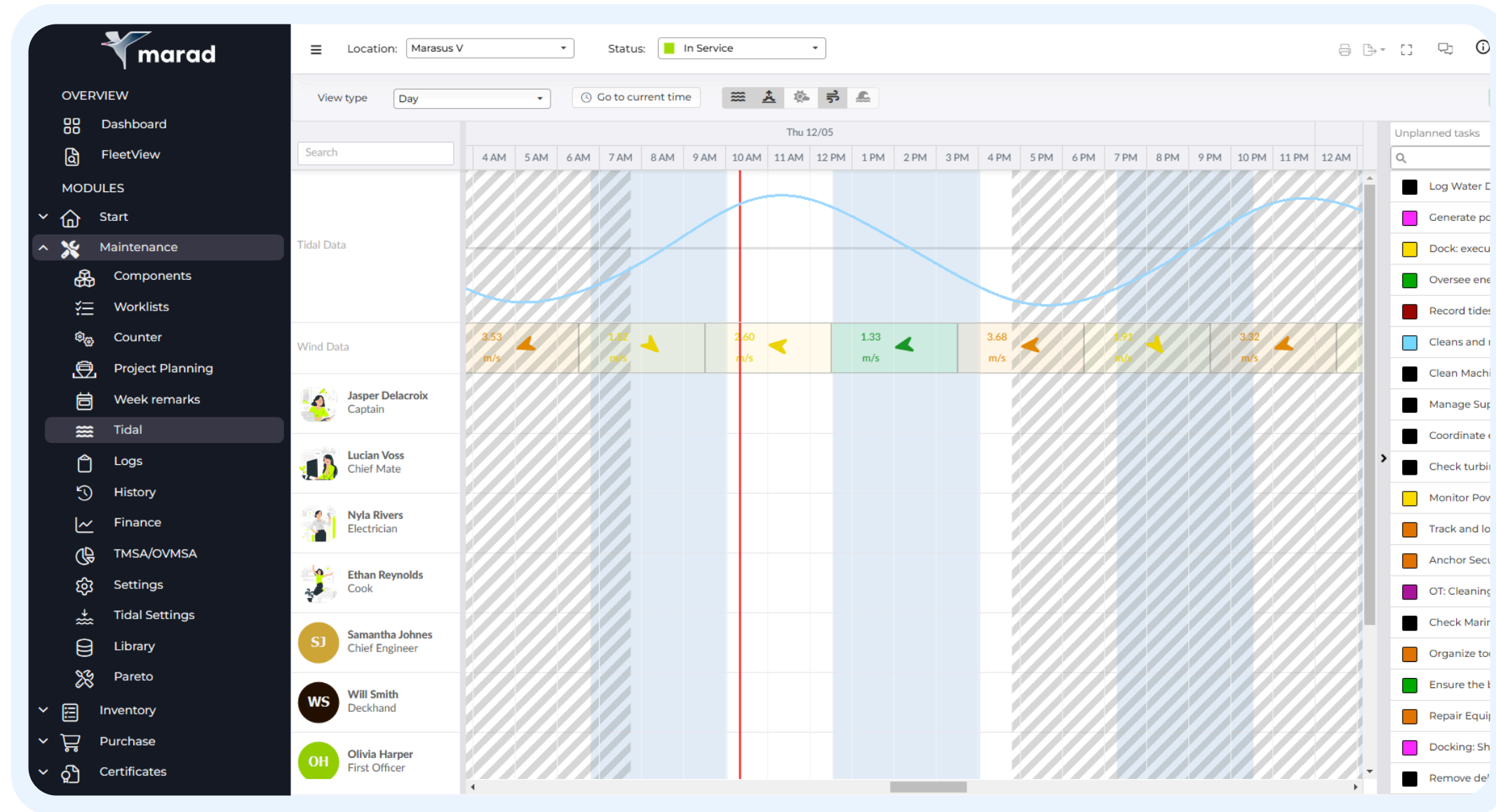
About

Centralize the management of all your bunkers, liquids, and gasses with the FLGO module. This module is designed to help you keep track of your bunkers and other types of products onboard such as MDO, water, lubricants, garbage, and much more.

Key features

- ✓ Create categories and products
 - ✓ Manage tanks and storage types
 - ✓ Extensive voyage reports
 - ✓ Full insight into consumption
 - ✓ Docking and project planning
 - ✓ Task approvals and permissions
- ✓ Measure, receive, and deliver products
 - ✓ Fully customizable with detailed settings
 - ✓ Add bunker notes to received products
 - ✓ Linked to voyages and MRV reports
 - ✓ Graphical and numerical overviews
 - ✓ Extensive log and history management





Module | Tidal

About

The tidal module optimizes maintenance for tide-affected assets, such as tidal arrays and floating solar farms, by providing tidal predictions alongside wind, weather, and wave forecasts

Key features

- ✓ Tidal coefficient prediction
- ✓ Wind and weather forecasts
- ✓ Wave data and forecasts
- ✓ Maintenance planning tool
- ✓ Engineer availability
- ✓ Daylight computation for a location
- ✓ Planned and corrective tasks
- ✓ Custom task priority
- ✓ Tidal data import function
- ✓ Assign tasks to users

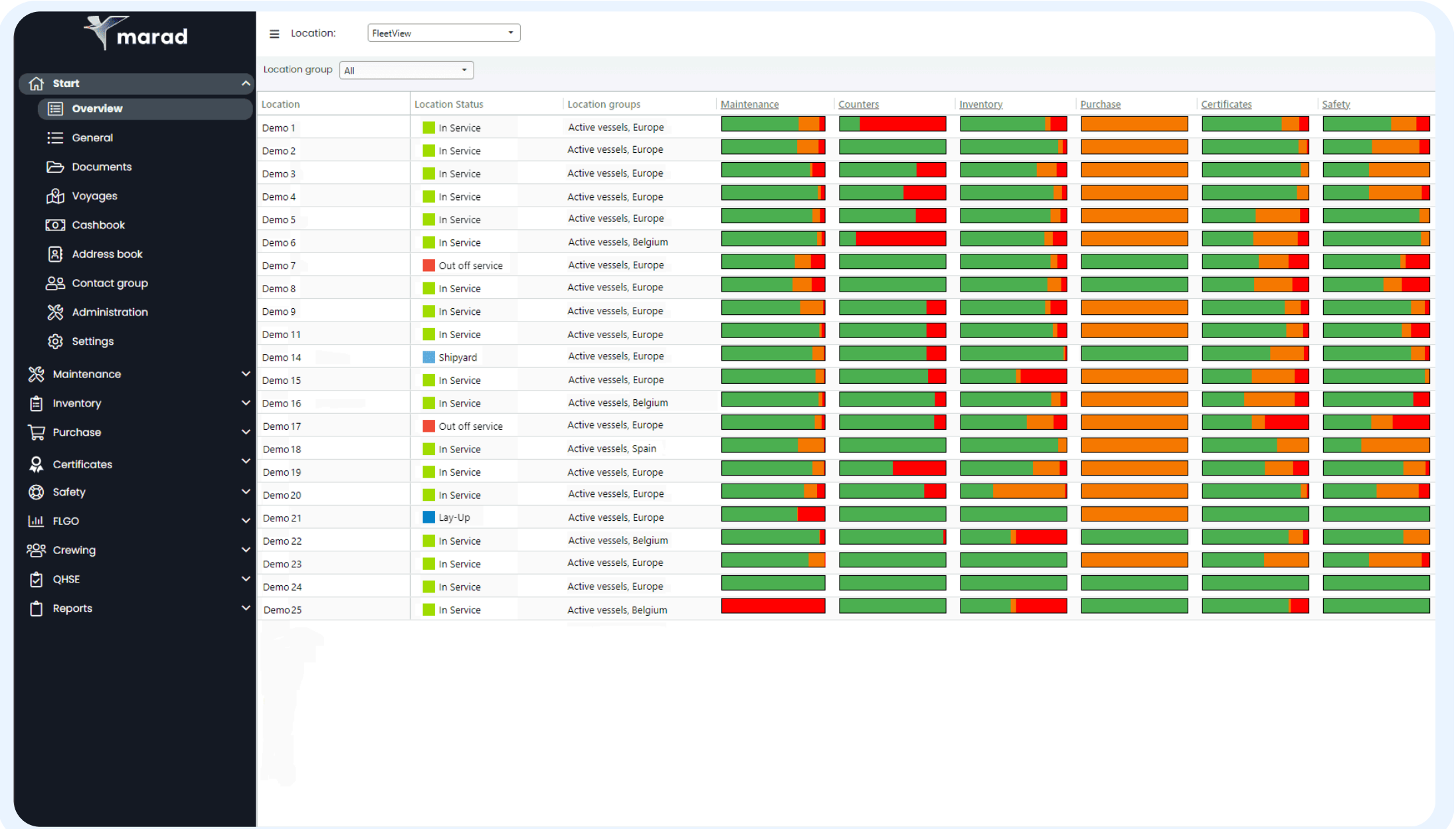
Function | Fleetview

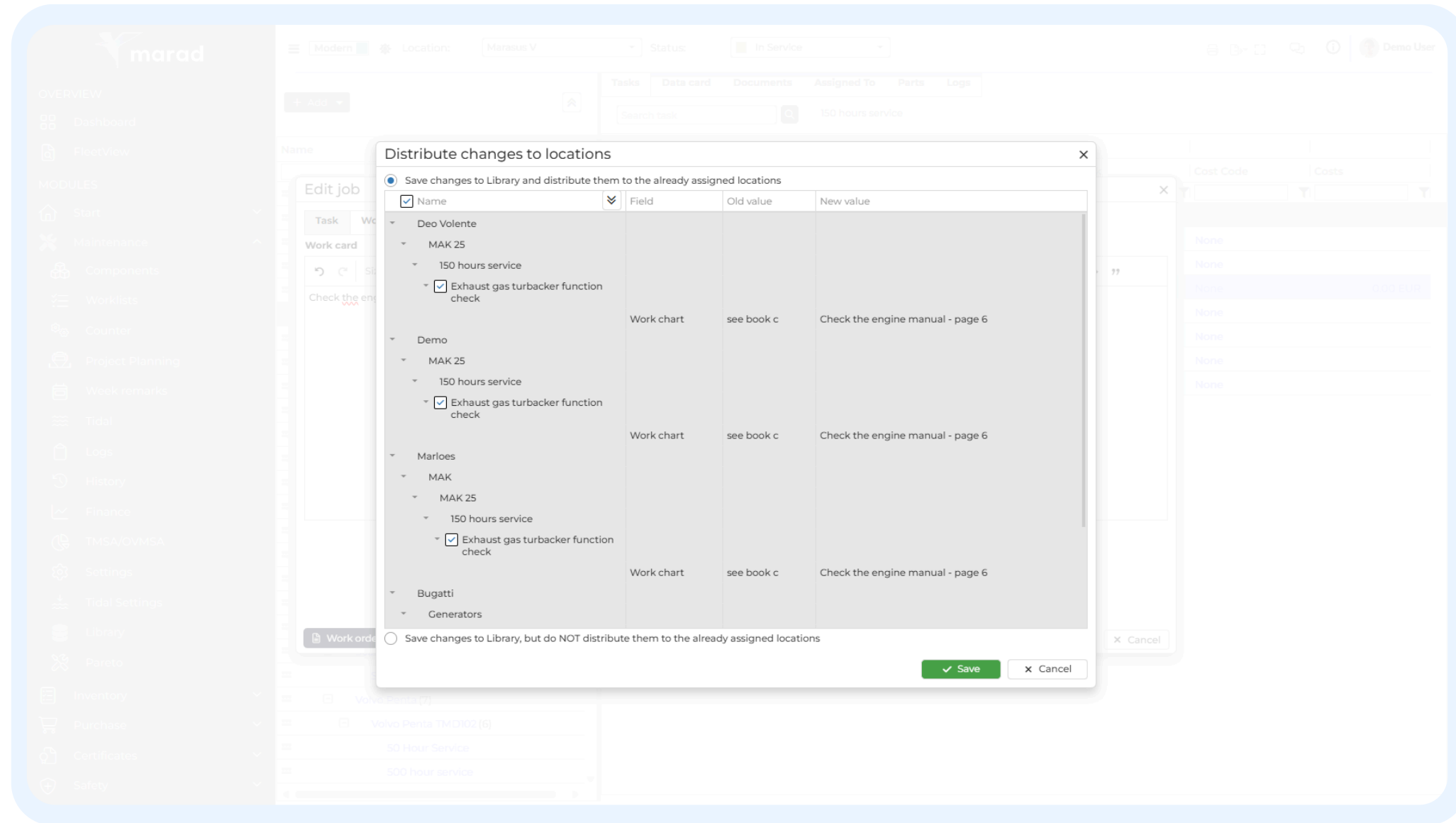
About

The fleetview function combines the data of all your assets and centralizes it in a single overview. With fleetview, you can quickly open an asset and view the status of your fleet in either a graphical or numerical overview, and manage all master libraries.

Key features

- ✓ Fleetwide reports
 - ✓ Filter on groups or a single asset
 - ✓ Quick access to libraries
 - ✓ TMSA/OMSA reports
 - ✓ Combined information of assets
- ✓ Fleetwide logs and history
 - ✓ Data analytics and extensive reports
 - ✓ Edit data in bulk
 - ✓ Built for superintendents and managers
 - ✓ Extra user information such as last edits





Function | Library

About

The Marad library functions are powerful tools that enable you to centralize the management of multiple assets. With the library functions, various actions no longer have to be entered separately for each vessel, but can be managed globally.

Key features

- ✓ Available for each module
- ✓ Add and distribute data
- ✓ Automatically sync changes
- ✓ Create master components
- ✓ Manage documents and checklists
- ✓ Assign certificates per user group
- ✓ Supports library- and local data fields
- ✓ Easily copy and paste data

Function | Reports

Analyze and report

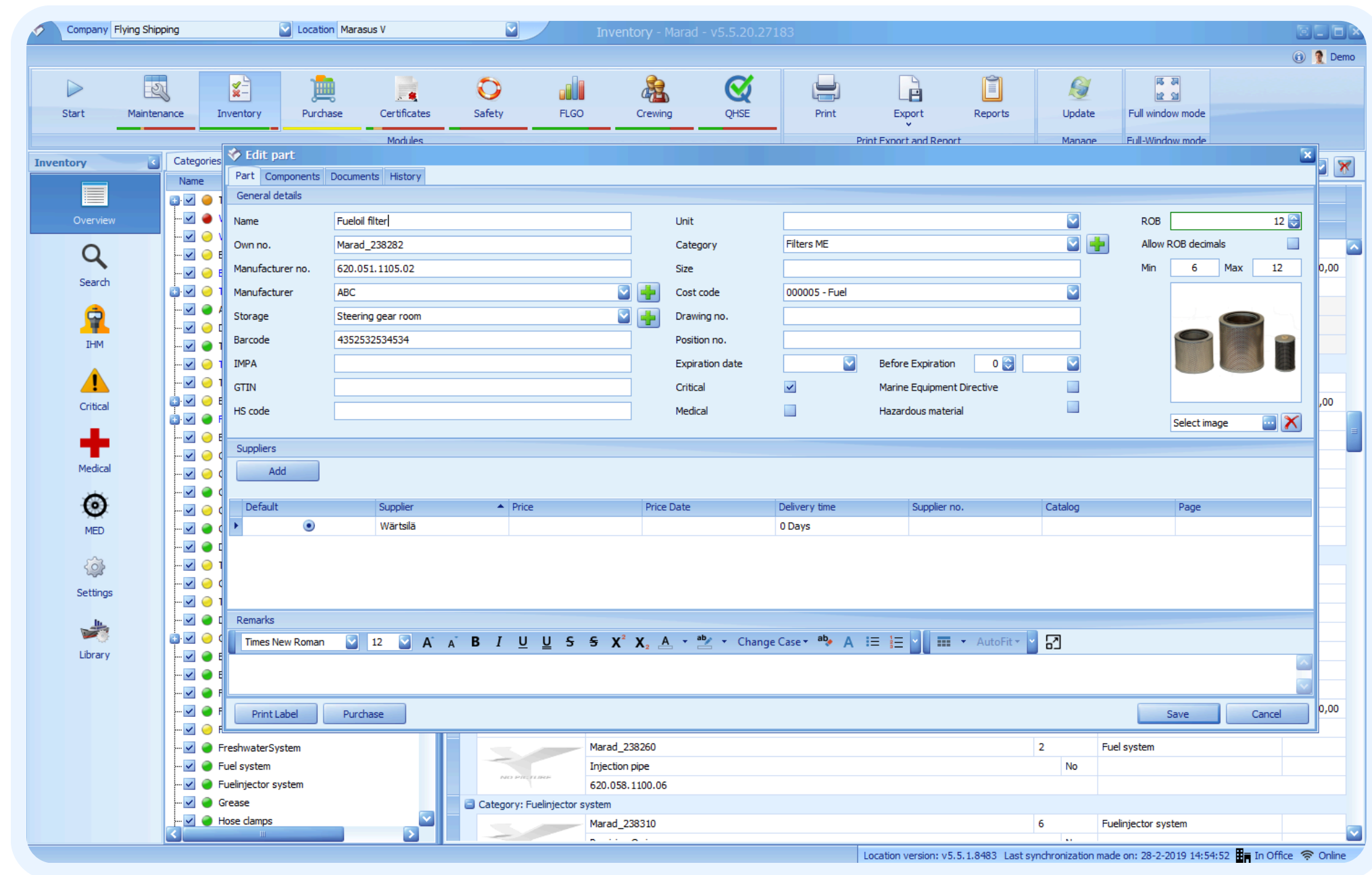
The application offers dozens of pre-built reports for easy data export. Some modules even allow exporting, modifying, and re-importing sheets. Each Marad module includes a report section, covering areas like cost estimations, crew documents, and more.

Key features

- ✓ Local and fleetwide reports
 - ✓ Available in each module
 - ✓ Export to Excel, CSV, and PDF
 - ✓ Includes export and import
 - ✓ Automatically email exports
- ✓ Export raw data or include documents
 - ✓ Easily review historical records
 - ✓ Provide data to external auditors
 - ✓ Available in numerical and graphical views
 - ✓ Optimized for transparency

Voyage details report

| Albert Johannes | | | <div>Mara Soft</div> | | | | | | | | | | | | | | |
|-----------------|------------|------------|--------------------------|-------------|------------|----------|--------|---------------|----------------|-------------|-------------|--------------|--------------------|--------------------|---------------|----------------------|---------------|
| IMO 73563567 | | | | | | | | | | | | | | | | | |
| Flying Shipping | | | FLEET MANAGEMENT SYSTEMS | | | | | | | | | | | | | | |
| | | | | | | | | | | | | | | | | | |
| Voyage no. | Start port | Start date | Start time | End port | End date | End time | Hours | Distance (NM) | Dist. Ice (NM) | TFwd (Mtr.) | Taft (Mtr.) | Tmean (Mtr.) | Displacement (Ton) | Cargo Weight (Ton) | Ballast (Ton) | Fuel cons. MDO (Ton) | CO2 MDO (Ton) |
| 2024-1 | New York | 1-12-2024 | 00:01 | Rotterdam | 29-12-2024 | 00:02 | 672,00 | 3423,00 | 0,00 | 0,50 | 0,00 | 0,25 | 210,00 | 5000,00 | 0,00 | 350,00 | 268,00 |
| 2024-2 | Shanghai | 29-12-2024 | 00:02 | Dubai | 26-1-2025 | 00:02 | 672,00 | 6042,00 | 3,00 | 0,70 | 0,00 | 8,00 | 447,00 | 1474944,00 | 443,00 | 1443086,00 | 238,00 |
| 2024-3 | Shanghai | 26-1-2025 | 01:02 | Sydney | 23-2-2025 | 01:02 | 672,00 | 4285,00 | 32,00 | 0,60 | 1,00 | 11,60 | 595,00 | 1159602,00 | 255,00 | 1312749,00 | 204,00 |
| 2024-4 | Singapore | 23-2-2025 | 02:02 | Sydney | 23-3-2025 | 02:02 | 672,00 | 6732,00 | 35,00 | 0,90 | 0,00 | 11,10 | 406,00 | 1264108,00 | 272,00 | 152215,00 | 300,00 |
| 2024-5 | Hamburg | 23-3-2025 | 03:02 | Antwerp | 20-4-2025 | 03:02 | 672,00 | 3769,00 | 3,00 | 0,70 | 1,00 | 7,10 | 542,00 | 1430910,00 | 145,00 | 423576,00 | 367,00 |
| 2024-6 | New York | 20-4-2025 | 04:02 | Antwerp | 18-5-2025 | 04:02 | 672,00 | 4993,00 | 8,00 | 0,90 | 0,00 | 9,50 | 380,00 | 1601648,00 | 478,00 | 163417,00 | 538,00 |
| 2024-7 | New York | 18-5-2025 | 05:02 | Sydney | 15-6-2025 | 05:02 | 672,00 | 4178,00 | 43,00 | 0,60 | 0,00 | 8,10 | 599,00 | 1272275,00 | 36,00 | 925130,00 | 282,00 |
| 2024-8 | New York | 15-6-2025 | 06:02 | Antwerp | 13-7-2025 | 06:02 | 672,00 | 4184,00 | 48,00 | 0,40 | 1,00 | 9,80 | 525,00 | 1430625,00 | 65,00 | 1411858,00 | 698,00 |
| 2024-9 | Singapore | 13-7-2025 | 07:02 | Hong Kong | 10-8-2025 | 07:02 | 672,00 | 2759,00 | 2,00 | 1,00 | 0,00 | 10,40 | 406,00 | 1535930,00 | 133,00 | 765701,00 | 203,00 |
| 2024-10 | Singapore | 10-8-2025 | 08:02 | Sydney | 7-9-2025 | 08:02 | 672,00 | 4720,00 | 36,00 | 0,50 | 0,00 | 8,40 | 539,00 | 1219362,00 | 18,00 | 1220281,00 | 201,00 |
| 2024-11 | Singapore | 7-9-2025 | 09:02 | Los Angeles | 5-10-2025 | 09:02 | 672,00 | 4842,00 | 28,00 | 0,40 | 0,00 | 8,70 | 464,00 | 1995743,00 | 160,00 | 1476055,00 | 374,00 |
| 2024-12 | Shanghai | 5-10-2025 | 10:02 | Dubai | 2-11-2025 | 10:02 | 672,00 | 4978,00 | 29,00 | 0,90 | 0,00 | 8,00 | 336,00 | 1630155,00 | 345,00 | 73125,00 | 220,00 |
| 2024-13 | Rotterdam | 2-11-2025 | 11:02 | Sydney | 30-11-2025 | 11:02 | 672,00 | 2323,00 | 24,00 | 0,40 | 1,00 | 11,80 | 339,00 | 1462998,00 | 82,00 | 181004,00 | 682,00 |
| 2024-14 | Hamburg | 30-11-2025 | 12:02 | Los Angeles | 28-12-2025 | 12:02 | 672,00 | 6317,00 | 48,00 | 0,60 | 0,00 | 9,10 | 494,00 | 1552901,00 | 105,00 | 166682,00 | 305,00 |
| 2024-15 | Singapore | 28-12-2025 | 13:02 | Antwerp | 25-1-2026 | 13:02 | 672,00 | 1981,00 | 23,00 | 0,60 | 1,00 | 10,30 | 402,00 | 1255945,00 | 358,00 | 901,00 | 568,00 |
| 2024-16 | Shanghai | 25-1-2026 | 14:02 | Hong Kong | 22-2-2026 | 14:02 | 672,00 | 5175,00 | 0,00 | 0,90 | 1,00 | 8,90 | 314,00 | 1698465,00 | 276,00 | 1464892,00 | 620,00 |
| 2024-17 | Singapore | 22-2-2026 | 15:02 | Sydney | 22-3-2026 | 15:02 | 672,00 | 2938,00 | 45,00 | 0,60 | 0,00 | 12,00 | 585,00 | 1017540,00 | 293,00 | 1172345,00 | 484,00 |
| 2024-18 | Hamburg | 22-3-2026 | 16:02 | Hong Kong | 19-4-2026 | 16:02 | 672,00 | 2554,00 | 44,00 | 0,80 | 0,00 | 9,90 | 497,00 | 1424314,00 | 168,00 | 347650,00 | 430,00 |
| 2024-19 | Rotterdam | 19-4-2026 | 17:02 | Los Angeles | 17-5-2026 | 17:02 | 672,00 | 7223,00 | 32,00 | 0,70 | 0,00 | 11,9 | 424,00 | 1992232,00 | 493,00 | 249679,00 | 653,00 |
| 2024-20 | Shanghai | 17-5-2026 | 18:02 | Sydney | 14-6-2026 | 18:02 | 672,00 | 1416,00 | 12,00 | 0,90 | 0,00 | 9,9 | 414,00 | 1813130,00 | 166,00 | 881872,00 | 485,00 |



Service | Implementation

Configuration and data entry

Implementing a ship management system can be a time-intensive process. We're here to help tailor Marad to your specific needs—whether you start with one of our templates, migrate your existing data, or build the system from scratch.

Project management

We provide comprehensive, end-to-end support. Whether it's requesting information, conducting assessments, migrating data, handling data entry, or monitoring crew performance, we're here to guide you through every step of the process.

Service | Consultation

Expert advice

We consult companies and their management on the best way forward, assess and audit systems, and advise on strategy. Examples are setting up role-based access control (RBAC) with the right permissions, performing data quality assessments, or simply advise on how to build the best maintenance structure possible.

Training

We offer training on-site or via digital meetings, along with access to our e-learning platform, Marad Academy, where you can:

- ✓ Create your own organization
- ✓ Invite unlimited users
- ✓ Easily certify your crew
- ✓ Access extensive courses
- ✓ Track performance
- ✓ View progress reports

18% COMPLETE

3/16 Steps

Previous Lesson

Mark Complete

Hello,

johannesvanurk!

Crewing

Introduction

About crewing

General

Adding crew members

Planning crew members

Settings

General settings

Crew member statuses

Safe manning

Rest hours regime

Rest hours templates

Documents list and required documents

Teams

Emergency contact relations

Ranks

Planning crew members

IN PROGRESS

In this lesson you will learn how to use the three planning options, namely:

- The checkbox option in the crewing overview
- The schedules option in the profile of a crew member
- The planning option in the dedicated visual planning tool

Previous Lesson

Mark Complete

Next Lesson

Back to Course

marad

OVERVIEW

Dashboard

FleetView

MODULES

Start

Maintenance

Components

Worklists

Counter

Week remarks

Logs

History

Finance

TMSA/OVMSA

Settings

Library

Pareto

TOOLS

Inventory

Purchase

Certificates

Safety

FLGO

Crewing

QHSE

Reports

Administration

Settings

Location: Mararus V

Status: In Service

Filters

Collapse/Expand

Name

GMDSS

Safetyplan on deck

Emergency Generator

AED

2 - Propulsion Plant (25)

Main engine (19)

Lub oil system

Charge air system

Control mechanism

Cooling water system

Cylinders general

Cylinder Units (7)

Cylinder 1

Cylinder 2

Cylinder 3

Cylinder 4

Cylinder 5

Cylinder 6

Cylinder 7

Engine general

Exhaust manifold

Fuel oil system

Governor

Turbocharger

Turning gear and starting syste

Propulsion (4)

Gearbox

Sterntube

CPP Electrical boxes

CPP systems

Steering (4)

Jobs

Data card

Documents

History

+ Add

Search job

Name

Maintenance (21)

100-hours maintenance

Check crankshaft alignment.

Check engine fastening bolts

Check function of overspeed trip.

Check pressure and temperature

Check thrust bearing clearance.

Clean/inspect flexible coupling

Dismantle and check vibration der

Flexible coupling

Inspect camshaft bearings

Inspect crankshaft

Inspect the bearing shells of one n

Inspect the camshaft driving gear.

Inspect the resilient mounts

Intermediate gears and bearings.

Non-scheduled maintenance

Replace connecting rod screws.

Replace filter of crankcase breathe

Replace intermediate gear bearing

Take oil sample from viscous vibra

Visually inspect flexible hoses.

1

2

3

4

5

6

7

8

9

10

11

12

13

14

15

16

17

18

19

20

21

22

23

24

25

26

27

28

29

30

31

32

33

34

35

36

37

38

39

40

41

42

43

44

45

46

47

ID

6A3B4988-A414-47E8-A713-07EBB6465627

8CD2CD18-0478-4CC5-8CA3-52E8B0A71EE9

78E017B2-753D-4666-AA52-FA95C69A4D48

55205476-260F-45CF-9694-CAA3300874B2

67676202-1686-4F56-A4F2-E65FD005055C

F0F452AC-3907-4157-8BD5-289F2CAFCB43

37A104E7-9BF8-40FD-A780-8435E9DB2D38

84345AD4-F2F5-4B50-AE28-D2FEC6C3482F

A3BB6E9A-3E4A-42C1-B9F5-98C3C4992BD8

227E5B96-85A5-4386-850C-55FBD7297E99

B032F94B-93B8-4670-A0EC-D748E7B2BBE0

A1783903-2AD7-41ED-AED7-C5B1CC987F6F

AEAC7B61-CFDD-4105-AFD4-997BB723E9AA

0C352232-51B9-43F7-977B-738BE5B1724E

A0E08ED0-F2F0-4FA7-A9B6-792A54DDA81E

F18CBDA-102B-4216-B26C-8BF237D62E9E

387E8DCD-6BD1-4D1E-A219-8BEF093CB426

E0526E47-DCF2-4160-87CE-933622BF0168

6A7B436D-60E6-4E45-993F-BD8930231C73

80DB8C39-069D-4E12-B6EC-AFD0276BD3A0

0231E57F-21A3-4D3E-B23E-E82AE8FF654B

7FA9E3B2-1B64-4410-B9FB-73682CAE62FC

174E16AE-47D2-4237-BCEA-F8FAF561D63D

03FCE558-8937-4A91-BF44-9CBA3DF7FEDA

7AD766AD-FBE3-4336-93FF-14FC8CE43E83

95253734-75BA-4440-B4A7-9231F9E33820

8C43ECBE-251E-4311-BA80-3C16A856B690

B6B8092C-9170-4D24-8D70-F71F7F2EA6FF

C1A7298F-8120-4D80-822E-911DE38FC283

68ED728A-6F49-47A6-AA35-1CB8721EBA6F

71C96BE6-D02B-428F-B75D-EAD3B7E577AF

A89A236E-2F93-4987-8EEE-70CAF43EAF81

710602C1-BCE4-4DA0-A9CB-AAFC458F99A6

6F38B5A3-573D-4AED-8618-1964A80CA382

CC163A9C-2134-4B3A-9327-8D7F37B199CB

E5D76ECD-4315-40E7-A27E-380DC33E68EC

5D44ABF3-DFA7-42B8-83D1-C97C5CD88750

26CE921E-B30B-42F7-B218-495C26467DD4

D6517097-14DE-4CE0-BC21-4179FCBF418D

E5B82620-9D38-4C21-86A7-3FF3C5A89C8D

2DE2490C-EA7D-4E06-BB87-14C8CB106497

193A53A3-D802-4723-BE13-D884BC4EA6D4

A624ED17-A50D-4352-93E5-04FDD63BCDA2

07108A65-39FB-4930-8554-18215F493C98

271AE220-98D3-4FAE-81A3-CACD349E7E66

CB58B161-D384-4449-A143-BF857A1DECE8

Name

Safety

Propulsion Plant

Steering

Aux engines

Electrical

Bilge-Ballast system

Fuel and lub oil

Freshwater system

Ventilation

Heating

Deck equipment

Nautical equipment

Compressed air

Tools

ISM

Hull

Delete component example

Ship Equipment

IT support

Air Cylinder

Cylinder 1

Cylinder 2

Cylinder 3

Cylinder 4

Cylinder 5

Cylinder 6

Cylinder 7

Fire equipment

General Alarm and PA-system

Rescueboat

Immersion suits

Lifejackets

Lifebuoys

GMDSS

Safetyplan on deck

Emergency Generator

AED

Lub oil system

Charge air system

Control mechanism

Cooling water system

Cylinders general

Cylinder Units

Engine general

Exhaust manifold

Fuel oil system

37A104E7-9BF8-40I

37A104E7-9BF8-40I

37A104E7-9BF8-40I

37A104E7-9BF8-40I

C8495A4B-A1EE-4A

E0526E47-DCF2-41

A3BB6E9A-3E4A-42

A3BB6E9A-3E4A-42

AEAC7B61-CFDD-4

AEAC7B61-CFDD-4

AEAC7B61-CFDD-4

AEAC7B61-CFDD-4

E13D6C50-7FE7-4E

681777E2-825A-48f

A1783903-2AD7-41I

55205476-260F-45C

55205476-260F-45C

55205476-260F-45C

55205476-260F-45C

A624ED17-A50D-43

A624ED17-A50D-43

A624ED17-A50D-43

A624ED17-A50D-43

A624ED17-A50D-43

A624ED17-A50D-43

A624ED17-A50D-43

6A3B4988-A414-47E

6A3B4988-A414-47E

6A3B4988-A414-47E

6A3B4988-A414-47E

6A3B4988-A414-47E

6A3B4988-A414-47E

6A3B4988-A414-47E

6A3B4988-A414-47E

6A3B4988-A414-47E

954A27FB-684D-44I

954A27FB-684D-44I

954A27FB-684D-44I

954A27FB-684D-44I

954A27FB-684D-44I

954A27FB-684D-44I

954A27FB-684D-44I

954A27FB-684D-44I

954A27FB-684D-44I

954A27FB-684D-44I

Service | Migration

Data conversion

Switching systems is easier than you might think—we manage this process daily. Our team ensures a seamless transition by carefully migrating your data, configuring the new system to meet your needs, and providing support every step of the way to minimize downtime and disruptions.

How it works

To migrate your data, we'll need access to your current system, whether it's an Excel spreadsheet, a web application, or a SQL backup file. Our data engineers will then retrieve the data and perform a mock migration to ensure accuracy. Once you're satisfied with the quality of the converted data, we'll proceed to import it into your production environment

Service | Integration

About

With Marad, we've designed a streamlined integration process to ensure a smooth and efficient transition without disrupting your business. Use cases are:

- Data Exchange: Exchange data with existing tools such as bookkeeping software.
- Data Analytics: Generate reports with analytics tools like Power BI and track performance metrics.
- Data Efficiency: Streamline operations with workflow automation platforms such as Power Automate.

REST API

The ability to integrate Marad with your existing tools and processes is key to unlocking its full potential. Whether you are managing maintenance schedules, monitoring fuel consumption, or tracking crew assignments, Marad allows you to centralize all data and operations in one platform. To interact with our database, we built the Marad REST API. Our API is documented in Swagger and can be found here: <https://external.marad.ms/swagger/ui/index>.



About us

Our story

Marad, short for maritime software, was founded in 1999 to revolutionize ship management. Maritime engineer Pieter and naval architect Gerrit combined their expertise to develop Marad, a planned maintenance system that has evolved into a comprehensive fleet management platform.

Headquartered at the harbor entrance of Urk, with stunning views of the IJsselmeer, Marad now supports thousands of vessels and installations worldwide, ensuring efficient and reliable operations.

Key figures

We have experienced significant growth in recent years and are proud to serve over:

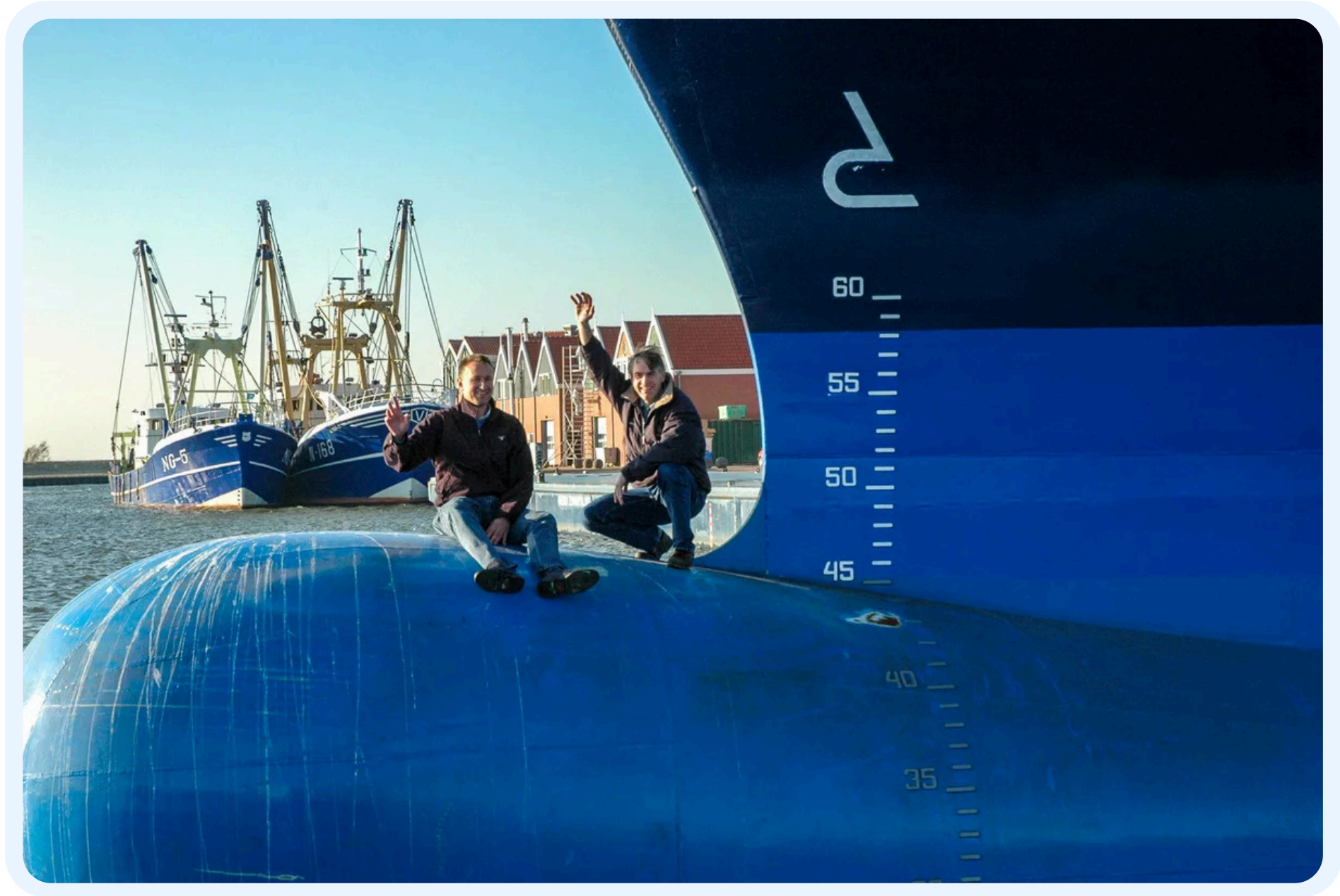
4,800 vessels

in

80 countries

for

26 years





Customers

Trusted by maritime leaders

Our ship and fleet management software is endorsed by the world's most reputable companies and governments across all sectors:

- Merchant Navy – [cargo](#), [bulk](#), [project](#), [tanker](#)
- Inland – [river transport](#), [inland waterways](#)
- Offshore – [oil](#), [gas](#), [energy](#), [subsea](#), [construction](#)
- Dredging – [maintenance](#), [capital](#), [environmental](#)
- Yachts – [motor yachts](#), [sailing yachts](#), [expedition](#), [charter](#), [support](#)
- Fishing and Aquaculture – [fishing](#), [farming](#)
- Cruise and Passenger Shipping – [cruise ships](#), [ferries](#)
- Education and Training – [universities](#), [training centres](#), [academies](#)
- Science and Research – [oceanography](#), [biology](#), [environmental](#)
- Naval and Defense – [navy](#), [coast guard](#), [marine security](#), [search and rescue](#)

Social impact

Giving back to the community and planet

At Marad, we believe our purpose extends beyond providing products to our clients. As a family business, philanthropy is deeply ingrained in who we are. We are committed to giving back to the community and the planet by supporting relief organizations, museums, training ships, sea cadets, and more. Our support includes donations, product sponsorships, or a combination of both. If you're inspired to make a difference as well, we highly recommend the following organizations:

- **YWAM Medical Ships:** YWAM delivers essential healthcare and training to some of the most remote communities in the world, improving countless lives.
- **Open Arms:** Open Arms is a Spanish NGO dedicated to search and rescue operations at sea, saving lives where it matters most.
- **Woord en Daad:** The Woord en Daad foundation supports tens of thousands of children by providing access to education, clean water, and other critical resources. We are proud to stand alongside these incredible organizations, making the world a better place one step at a time.





Contact

Get in touch

We'd be more than happy to answer all your questions! Contact us to learn more about our pricing, implementation, or perhaps a migration from your current system.

Email: info@marad.com

Phone: +31 (0)527 258 346

Address: Burgemeester J. Schipperkade 8a, 8321EH, Urk, the Netherlands

Request a demo

Whether you want to explore Marad independently or through a customized tour, we're here to ensure your success. Our platform is designed by maritime professionals who understand the unique challenges of managing fleets and marine assets.

- ✓ A demo is free and non-binding
- ✓ Tailored to fit your company and assets
- ✓ Built by seafarers who understand your needs



This is a publication of Marad B.V.
9th of September, 2025

info@marad.com
+31 (0)527 258 346
Burgemeester J. Schipperkade 8a
8321EH, Urk, the Netherlands

www.marad.com